

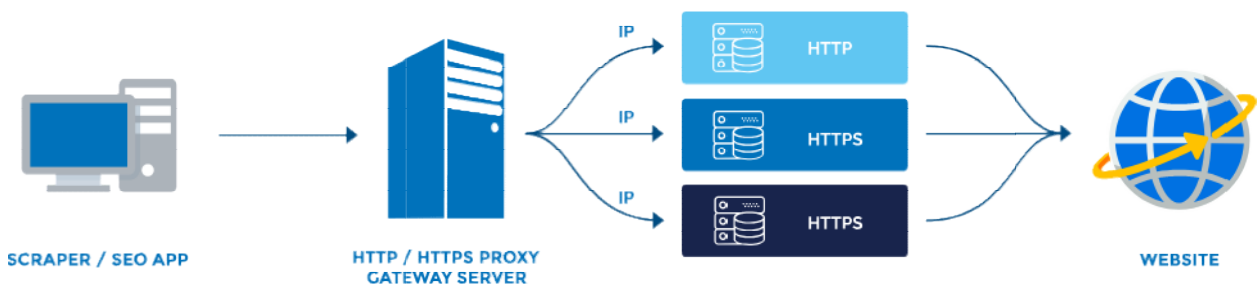
## How to use Proxy-Connect Backconnect Proxies in GSA Search Engine Ranker

Our Backconnect or IP rotation proxy is a single gateway IP based proxy system that enables you to connect to multiple HTTPS/CONNECT worldwide proxies using only a single static gateway IP and 2 ports in GSA SER. The proxies are a mix of premium worldwide proxies with a high uptime of over 99%.

This means that instead of configuring individual IPs, you simply configure a single Gateway IP with the designated port and the gateway server then re-routes your connection to the individual thousands of proxy IPs so that each time you connect to the gateway proxy IP, you are connected to different proxy servers which are located in multiple countries.

The proxies are connected to via a single Gateway IP and port. Each port connection is re-routed to different HTTP/HTTPS proxy IPs in multiple countries in the flow scheme depicted below:

**Your computer->Single IP Gate-Server->Multiple Proxy Servers -> Target website**



### Proxy Gateway and Ports Details :

Gateway IP	Port	Protocol	Geo-location
Available to members only	8888	HTTP/HTTPS	Worldwide
Available to members only	5000	SOCKS 5	Worldwide

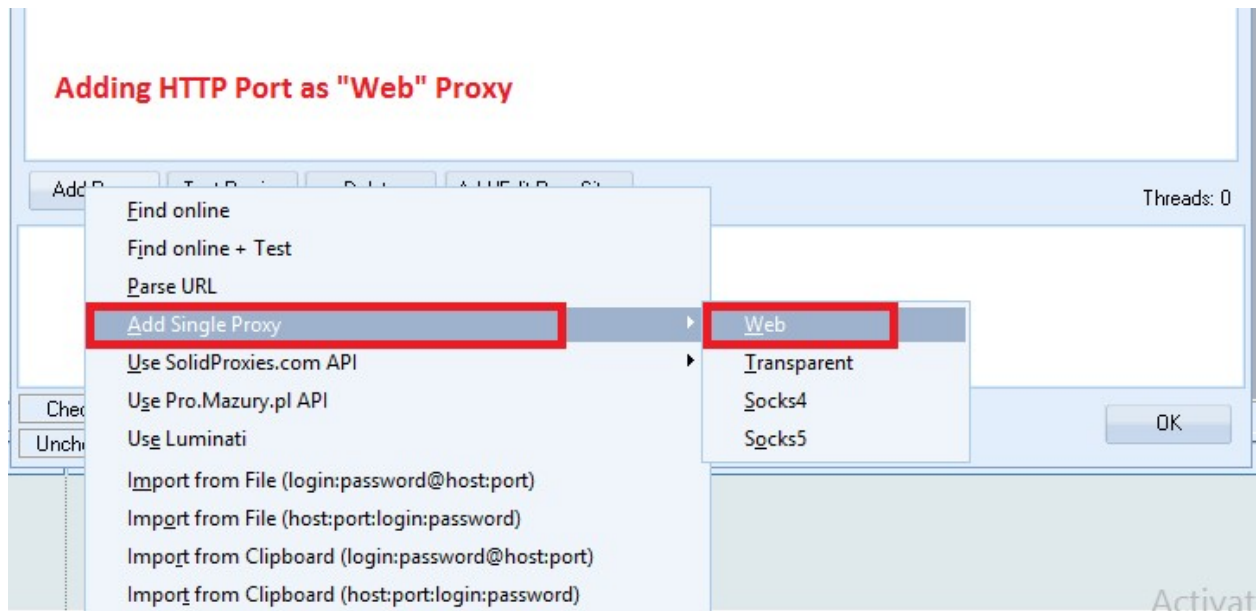
Note : Please note that our proxy performance/speed depends on specific application and the specific website you are scraping or posting on. Also the proxy gateway server and the location and specifications of your server or computer from which you will be accessing the proxies from may also play a factor.

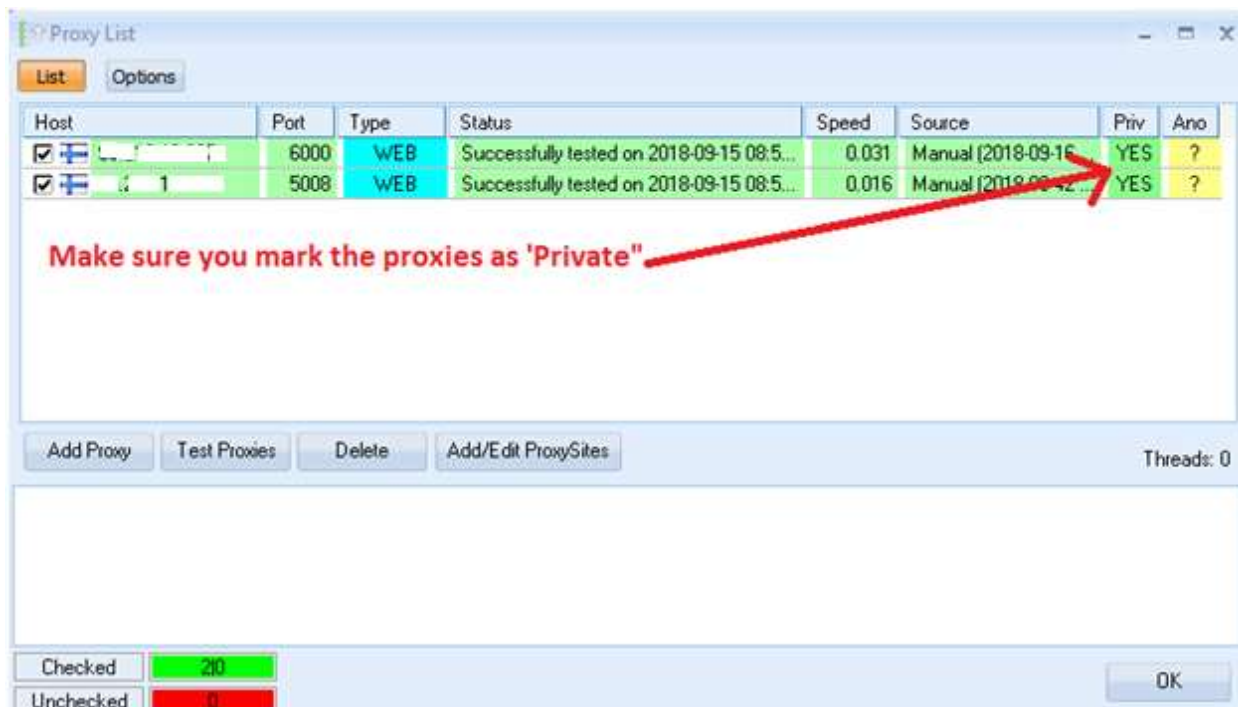
## Configuration Steps in GSA SER:

**Step 1:** Add the backconnect proxy gateway IP and the corresponding ports for each protocol as shown in the screenshot below. The backconnect ports and their supported protocols are listed below:

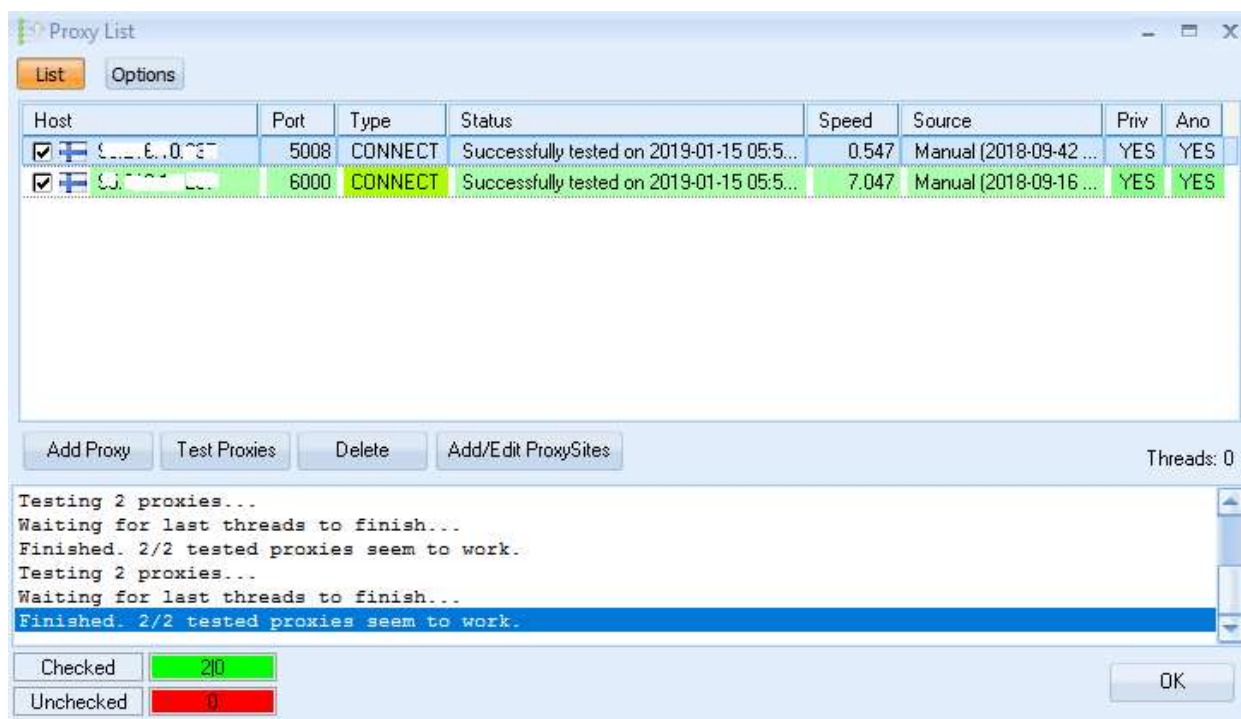
Gateway IP	Port	Protocol	Geo-location
Available to members only	8888	HTTP/HTTPS	Worldwide
Available to members only	5000	SOCKS 5	Worldwide

Examples are illustrated in the screenshots below:





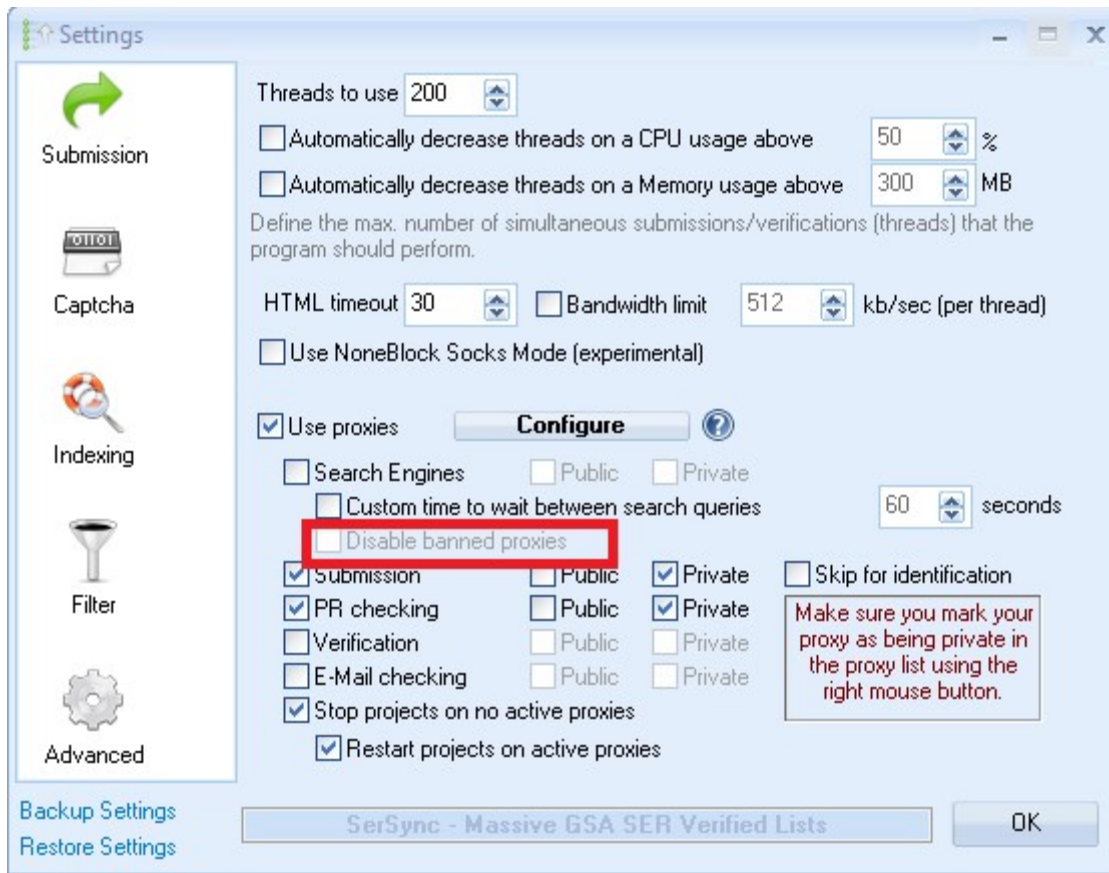
Note that both proxies can also be used as CONNECT proxies as shown below:



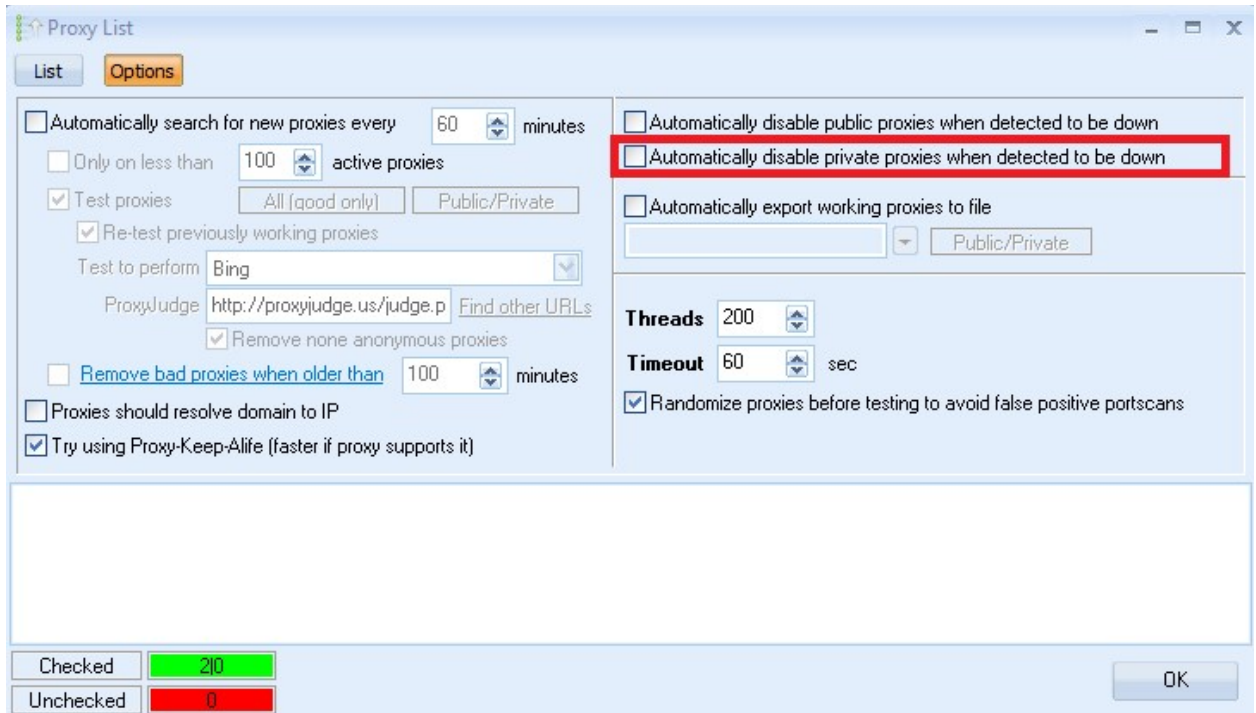
**Note:** Make sure you mark the proxies as PRIVATE proxies and add the HTTP ports as "WEB". In some cases, when testing the proxies in GSA SER, the test may fail. This test failure does not mean the backconnect proxy is not working. We recommend you ignore the tests and just proceed with using the proxies.

**Step 2:** Configure GSA SER to allow persistent connection to the proxies. Please be aware that our backconnect proxy gateway will not always give 100% success on all requests. These are not designed to be 100% and there will always be some timeouts or connection failures. To counter this, it is strongly recommended that you use the proxies in a persistent connection mode where you attempt to connect multiple times to get higher success rate. To enable persistent connection, please do the following:

- Under "use proxies" there is a option to disable banned proxies. Make sure this is unchecked.



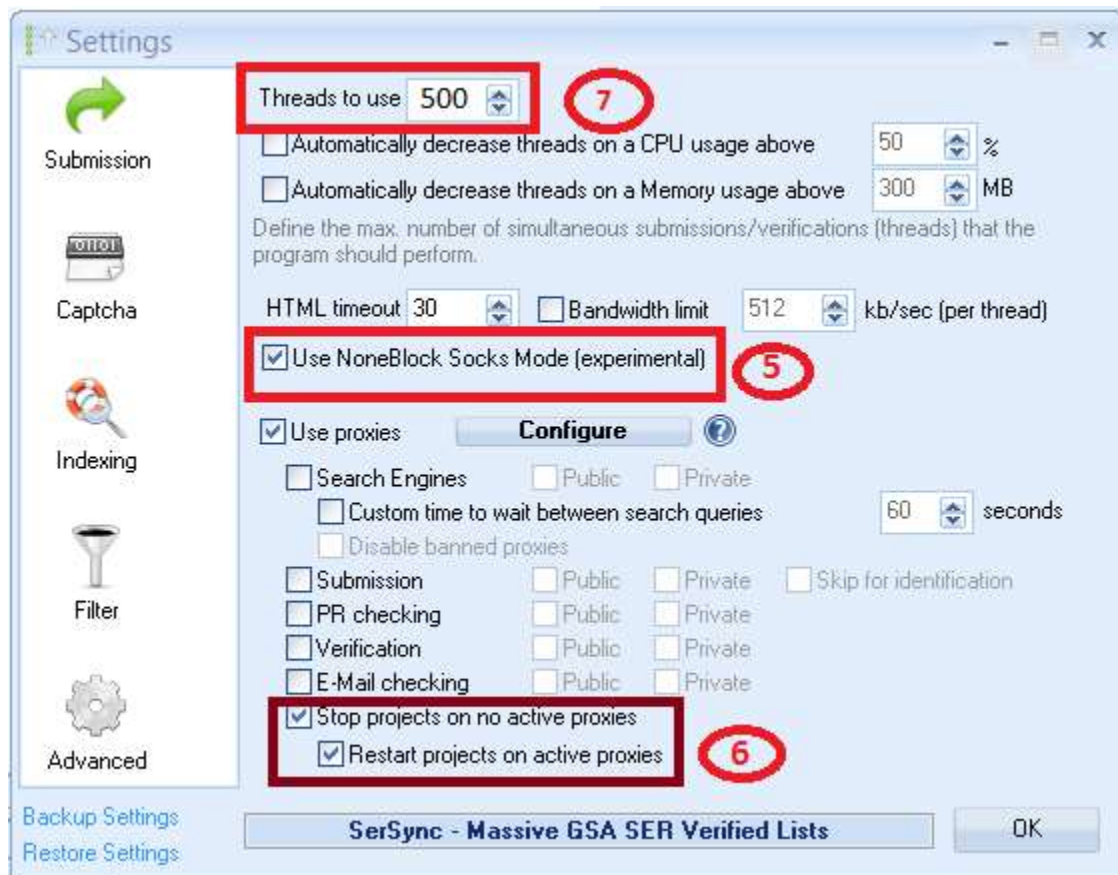
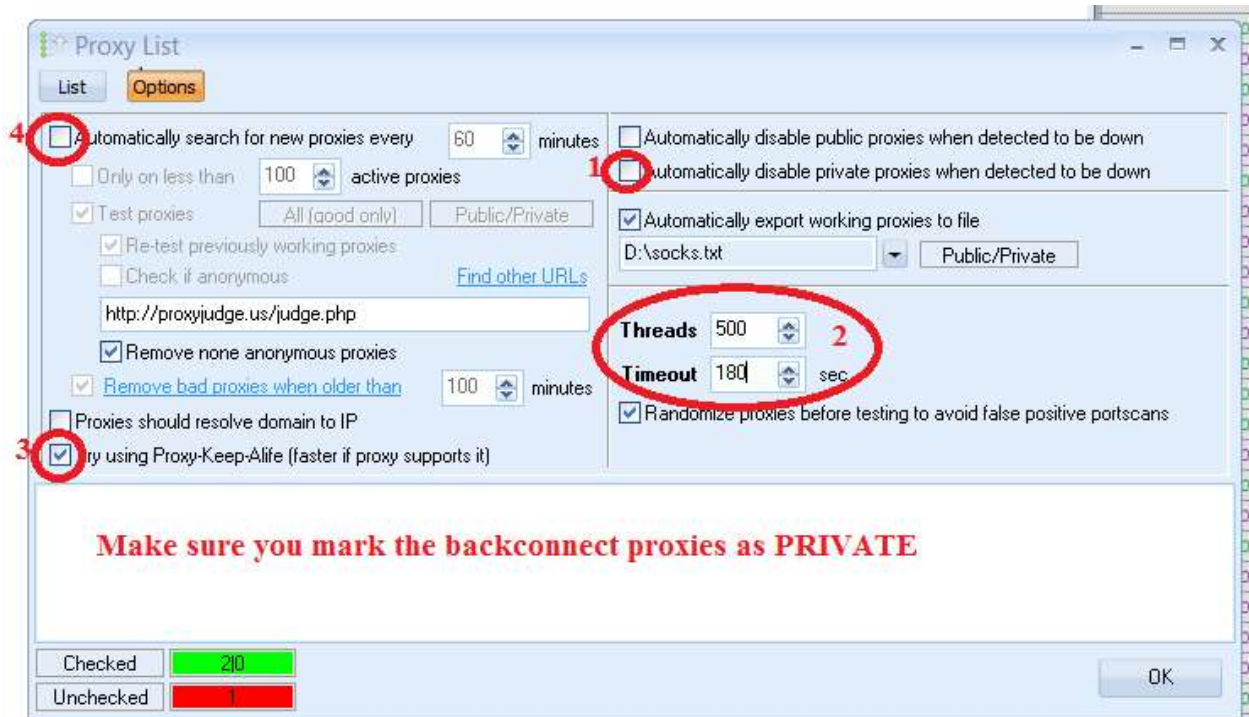
- Click on the CONFIGURE button and then click on OPTION tab and uncheck the options to automatically disable "public" and "private" proxies when detected as being down.



**Step 3:** Set additional settings in the proxy settings window as follows:

- Set a high timeout value of 120 seconds
- Set number of threads as desired (depending on your system capacity). We recommend max 500
- Enable the proxy-keep alive function for better performance
- Uncheck the “automatically disable private proxies when detected to be down” checkbox
- Uncheck the “automatically search for new proxies every” checkbox
- Check the “Stop projects on no active proxies” option
- Check the “Restart projects on active proxies” option

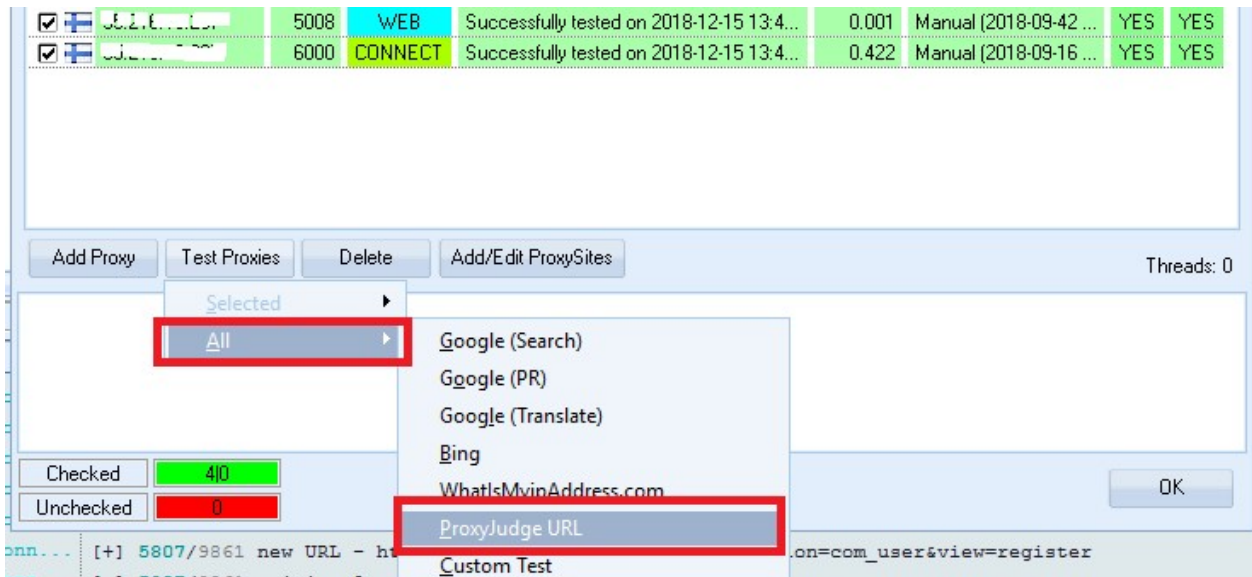
These options/settings are illustrated on the screenshots below:



**Note:** The back-connect proxies always work 24/7. But remember that you are being redirected to multiple huge backend proxy IPs some of which may timeout quickly or may not respond 100% of the time. Therefore, occasional proxy failure or timeout is considered normal and should not be taken to mean that the gateway proxy server is dead. For this reason, you may need to test multiple times before you may get a success. Once your IP has been authenticated for the back-connect proxy use, you should expect the proxies to work even without testing.

In addition, please expect few failures or minimal percentage of failures of the proxy requests you will be making. Due to multiple network factors beyond our control, occasional failed requests are to be expected and perfectly normal.

So expect up to 20% of all requests to fail. For example, if you make like 1 million total requests via the proxies, expect up 10-20% of these 1 million requests to fail. We allow unlimited connections per month and unlimited threads to compensate for this minimal failure rate.



**Important:** Please note that our backconnect proxies are IP authenticated. Therefore your IP must be authenticated before you will be able to connect to the proxies. If the proxies test fails, it simply means your IP has not been authenticated. Please contact us if the test fails.

**Enjoy our back-connect proxies!**

If you have any question, please let us know. We can be reached by email : [toughhost@live.com](mailto:toughhost@live.com) or via Skype/Telegram @ dynamiczone360

Regards, proxy-connect.com